

Blackline

Intercept Warm Edge Spacer System



Blackline Warm Edge Spacer is designed for maximum performance and superior aesthetics; system matched and guaranteed to run on GED Intercept Spacer System. (Patent Pending)

Blackline Spacers are designed to eliminate the view of the spacer making a beautiful finished window. The spacer disappears in the sash, which improves aesthetics of windows.

Blackline spacers innovative U-Shaped construction is the most durable and flexible alloy spacer on the market. Superior Warm-Edge technology coupled with the best gas retention in the industry maximizes thermal protection and best overall profit.

The Blackline Warm Edge Spacer system has it all: Maximum Performance & Ultimate Beauty.



User Benefits

- Superior Warm Edge Technology
- Decreased Wear on Intercept rollers and tooling
- Best Available Strength and Gas Retention
- Improved Overall Window Aesthetics
- Meets Energy Star Requirements
- Strongest Corners Available

Leading Edge Benefits

- System Matched GED Approved Material
- ALL Prime Material
- Tight Manufacturing Tolerances
- Stocked Sizes across N. America
- Competitive Prices

Technical Specifications: Raw Material

Compliances:	Energy Star	PPG
	GED Intercept	HB Fuller
Material:	Black Plate Steel	Kommerling
Material Thickness:	.0105"	
Cut Slit Width Tolerance:	+.000" /-.005" Burr-Free Edge	
Temper:	T-4 (AIM 58-64) RW 30-T Continuous Annealing Process	
Coil Core Size (I.D.):	16"	
Coil O.D.:	36" Maximum	
Coil Weight of 1" wide:	225# (approximately)	
Linear feet/coil:	6400 ft (approximately)	



Technical Specifications: Surface Coating

Product:	Non Fogging Polyester Paint
Color & Finish:	Gloss Black
Coating Thickness/ side:	0.0006" to 0.0007"
Hardness:	F Eagle Turquoise
Solvent Resistance:	50+ Double Rubs, MEK
Flexibility:	OT Bend

** Both sides of the material are coated using identical material. The requirements for substrate pre-treatment, coating thickness, flexibility, hardness, adhesion and chemical resistance are specified and controlled. Values contained on this table are for reference purposes only.



Leading Edge Distribution

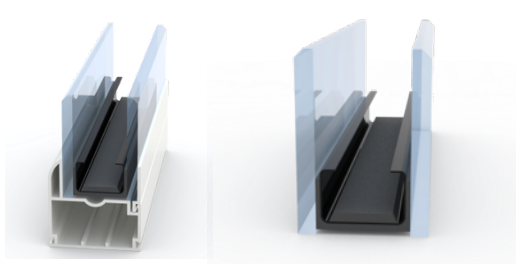
1333 Highland Rd Ste.C Macedonia, OH 44087 (440) 786-2444
www.leadingedgegedistribution.com

Patent Pending



Blackline

Intercept Spacer System



Blackline Spacer System was originally introduced as a Warm Edge Stainless Steel Spacer. However, with the increasing popularity of this attractive spacer, Leading Edge has added this for all the current Intercept spacer systems. Blackline Spacers are designed to eliminate the view of the spacer making a beautiful finished window. The spacer disappears in the sash, which improves aesthetics of windows.

Blackline Intercept spacer provides the option of less expensive carbon steel material where the performance and additional cost of stainless is unnecessary. GED and LED have worked together to develop this unique alloy resulting in this value added product.

Blackline Intercept Spacer is available for both Intercept and ULTRA machines. Differentiate yourself from the market by using Blackline Spacers.

User Benefits

- Interchangeable with .0078 Ultra Stainless Steel Coil
- Half the cost of Stainless Steel
- Premium product aesthetics at Intercept cost.
- Approved by major sealant / matrix suppliers
- Peace of mind with GED's extensive testing and support

Leading Edge Benefits

- GED's "Approved Supplier"
- System Matched for Intercept & Ultra Systems
- Multiple products from single supply source
- Stocked Sizes across N. America
- Only supplier providing coil products specifically to W&D manufacturers

Technical Specifications Blackline ULTRA

Common Spacer / Coil Sizes

Compliances:	Energy Star GED Intercept®	H.B. Fuller TMHM-067 Kommerling
Material Thickness:	0.0078" +/- 0.0004	NFRC
Cut Slit Width Tolerance:	+.000" /-.005" Burr-Free Edge	
Coil Core Size I.D.:	16"	
Coil O.D.:	36" Maximum	
Coil Weight of 1" wide:	225# (approximately)	
Linear feet/coil:	8500 ft (approximately)	

** Proper tooling is required to run Blackline on GED Ultra Spacer System

Spacer Size	Air Space	Slit Width	Lbs. Per Ft	34" OD Coil Weight
7/32"	1/4"	0.882	0.0239	180
1/4"	9/32"	0.913	0.0247	187
11/32"	3/8"	1.006	0.0273	206
13/32"	7/16"	1.069	0.029	219
15/32"	1/2"	1.131	0.0307	232
17/32"	9/16"	1.193	0.0323	246
19/32"	5/8"	1.257	0.0341	258
11/16"	23/32"	1.351	0.0366	277
23/32"	3/4"	1.383	0.0375	283
25/32"	13/16"	1.445	0.0392	296

Technical Specifications Blackline Intercept

Compliances:	GED Intercept® PPG	H.B. Fuller Kommerling
Architectural Testing	ASTM E2188 / E2190 IG Durability	
Material Thickness:	0.0105" ± 0.0005	
Weight:	95# per base box (.0105") thickness	
Temper:	T-4 (AIM 58-64 RW 30-t)	
Finish:	#5 Finish (AIM 45±15 Micro-Inches)	
Cut Slit Width Tolerance:	+.000" /-.005" Burr-Free Edge	
Coil Core Size I.D.:	16"	
Coil O.D.:	36" Maximum	
Coil Weight of 1" wide:	225# (approximately)	
Linear feet/coil:	6400 ft (approximately)	

Common Spacer / Coil Sizes

Spacer Size	Air Space	Slit Width	Lbs Per Ft.	34" OD Coil Weight
7/32"	1/4"	0.862	0.0306	171
1/4"	9/32"	0.893	0.0317	177
11/32"	3/8"	0.986	0.035	196
13/32"	7/16"	1.049	0.0372	208
15/32"	1/2"	1.111	0.0394	220
17/32"	9/16"	1.173	0.0416	233
19/32"	5/8"	1.237	0.0439	245
11/16"	23/32"	1.3	0.0473	264
23/32"	3/4"	1.363	0.0484	270
25/32"	13/16"	1.425	0.0506	283

Stocked in our convenient locations throughout N.America

