



Leading Edge's ThinStar was developed to interchange with .0078 gauge EdgeStar stainless steel for GED's Ultra Spacer System.

ThinStar provides the option of less expensive tin plate material where the performance and additional cost of stainless is unnecessary. GED and LED have worked together to develop this unique alloy resulting in this value-added product. Additionally, GED has exclusively designated and supports LED as the "approved supplier" of ThinStar.

In today's window performance driven environment, ThinStar offers a conductivity value of 51.6 as documented in NFRC's Appendix C "Thermophysical Property Values of Materials", Table C.1

LED's ThinStar is an example of our commitment to enhance current systems by providing savings through the development of alternative materials. Creating solutions, which result from understanding manufacturers needs, are a core strength of LED's exclusive focus to the W&D industry.

User Benefits

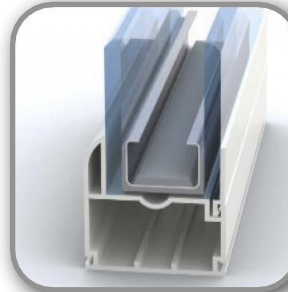
- Interchangeable with .0078 Ultra Stainless Steel Coil
- Lower Cost alternative to Stainless Steel
- Cost per linear foot comparable to Intercept tinplate
- Approved by major sealant / matrix suppliers
- Peace of mind with GED's extensive testing and support

Leading Edge Benefits

- GED's ThinStar "Approved Supplier"
- System Matched for GED® Ultra Systems
- Multiple products from single supply source
- Stocked Sizes across N. America
- Only supplier providing coil products specifically to W&D manufacturers

Technical Specifications

Compliances:	Energy Star GED Intercept®	H.B. Fuller TMHM-067 Kommerling NFRC
Material Thickness:	0.0078" +/- 0.0004	
Cut Slit Width Tolerance:	+.000" /-.005" Burr-Free Edge	
Coil Core Size I.D.:	16"	
Coil O.D.:	36" Maximum	
Coil Weight of 1" wide:	225# (approximately)	
Linear feet/coil:	8500 ft (approximately)	
** Proper tooling is required to run ThinStar on GED Ultra Spacer System		



Common Spacer / Coil Sizes

Spacer Size	Air Space	Slit Width	Lbs. Per Ft	34" OD Coil Weight
7/32"	1/4"	0.882	0.0239	180
1/4"	9/32"	0.913	0.0247	187
11/32"	3/8"	1.006	0.0273	206
13/32"	7/16"	1.069	0.029	219
15/32"	1/2"	1.131	0.0307	232
17/32"	9/16"	1.193	0.0323	246
19/32"	5/8"	1.257	0.0341	258
11/16"	23/32"	1.351	0.0366	277
23/32"	3/4"	1.383	0.0375	283
25/32"	13/16"	1.445	0.0392	296